

EU Summerschool Rab june 2014

Studying residential architecture at Rab

*From archaeology of buildings
to archaeology of urbanism.*

1. Record buildings:

- Observe
- Discover
- Take photos
- Take measurements
- Make photoplan
- Stratigraphical analysis
- Make forms
- Inventory : doors, windows, capitals ...

2. Ethnoarchaeological-sociological analysis

- On the spot
- *Prepare a form for interviews*

3. Textual and photo sampling and studying

4. Synthesis

1. Record Building

A- Observe

B- Discover

C- Take photos

D- Take measurements

E- Make photoplan

F- Stratigraphical analysis

G- Make forms

H- Inventory : doors, windows, capitals



- Separated the plan into insulae blocks
- Located specific buildings on the cadaster

1. Record Building

A- Observe

B- Discover

C- Take photos

D- Take measurements

E- Make photoplan

F- Stratigraphical analysis

G- Make forms

H- Inventory : doors, windows, capitals

A- Observe



Focus on the lower street

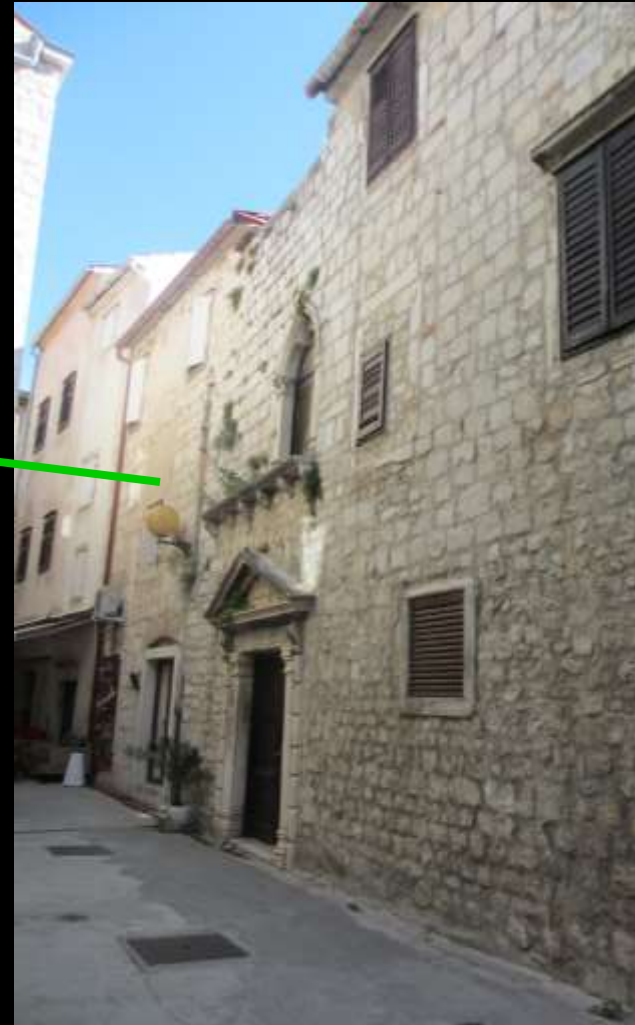
First building - Palace Benedetti



Second building – Palace Nimira



Third building – Palace Galzigna



1. Record Building

A- Observe

B- Discover

C- Take photos

D- Take measurements

E- Make photoplan

F- Stratigraphical analysis

G- Make forms

H- Inventory : doors, windows, capitals

B- Discover





1. Record Building

A- Observe

B- Discover

C- Photograph

D- Take measurements

E- Make photoplan

F- Stratigraphical analysis

G- Make forms

H- Inventory : doors, windows, capitals

C- Photograph



1. Record Building

A- Observe

B- Discover

C- Take photos

D- Take measurements

E- Make photoplan

F- Stratigraphical analysis

G- Make forms

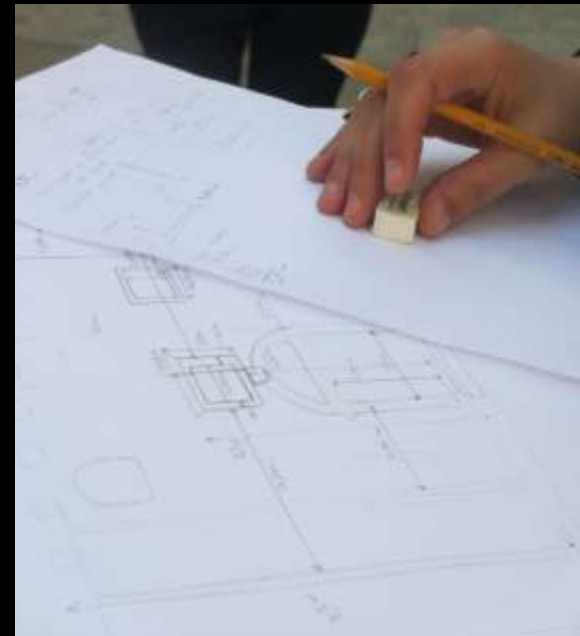
H- Inventory : doors, windows, capitals

D- Take measurements



Tools :

- Paper and pencil
- Camera
- Meter
- Plombin-line
- Laser meter



First Building



Second Building

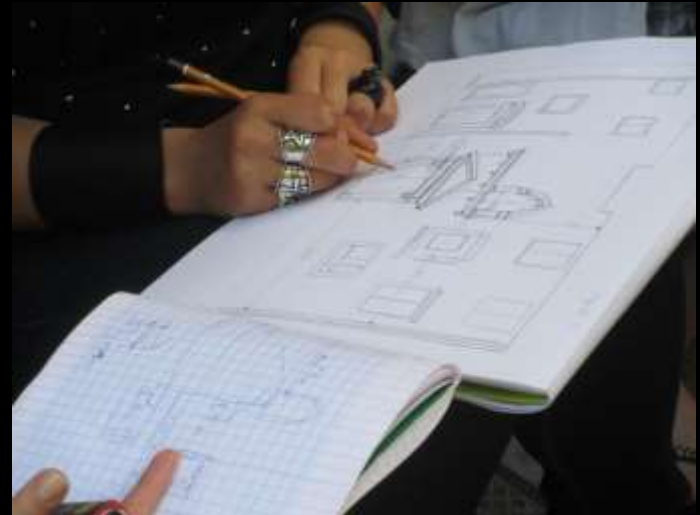
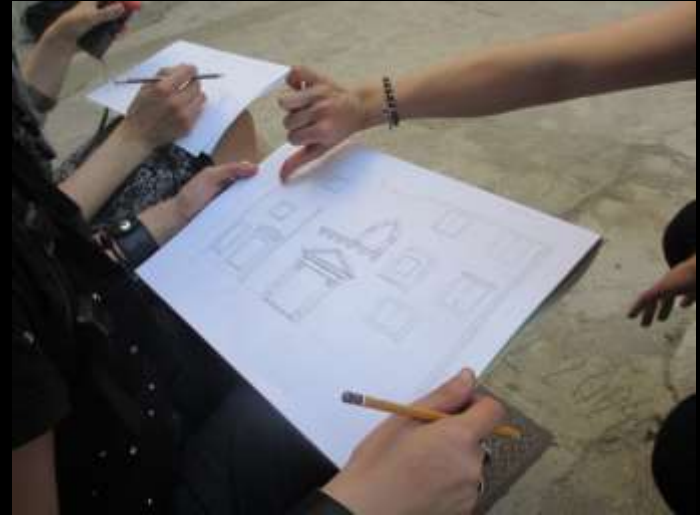
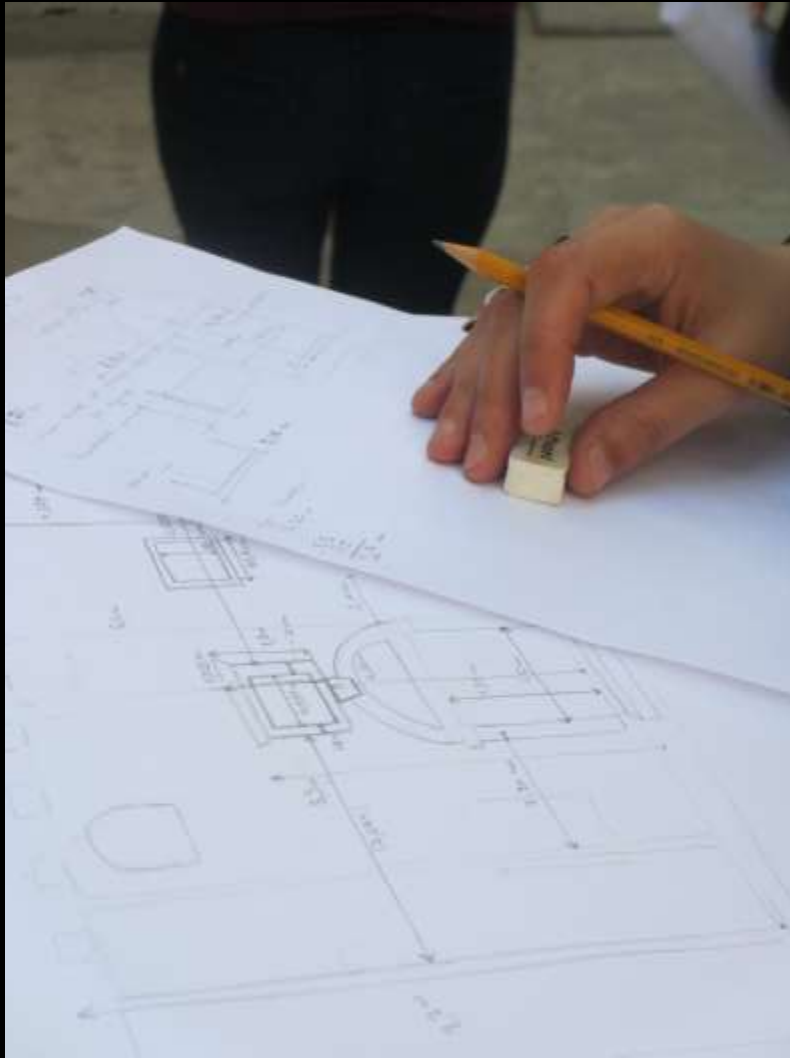


Third Building



Drawing





1. Record Building

A- Observe

B- Discover

C- Take photos

D- Take measurements

E- Make photoplan

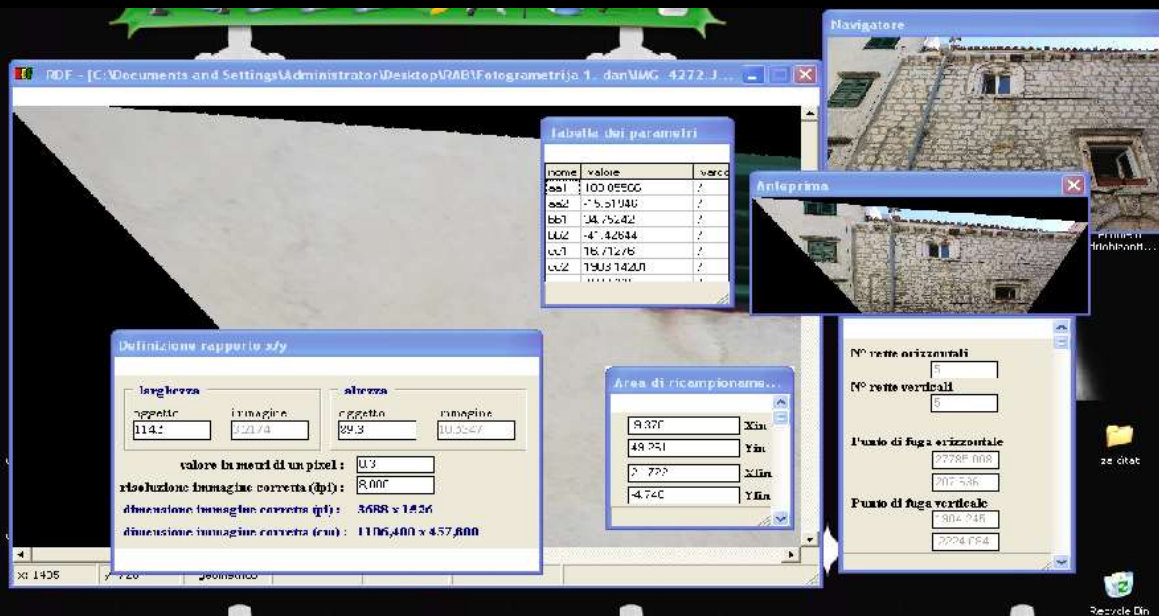
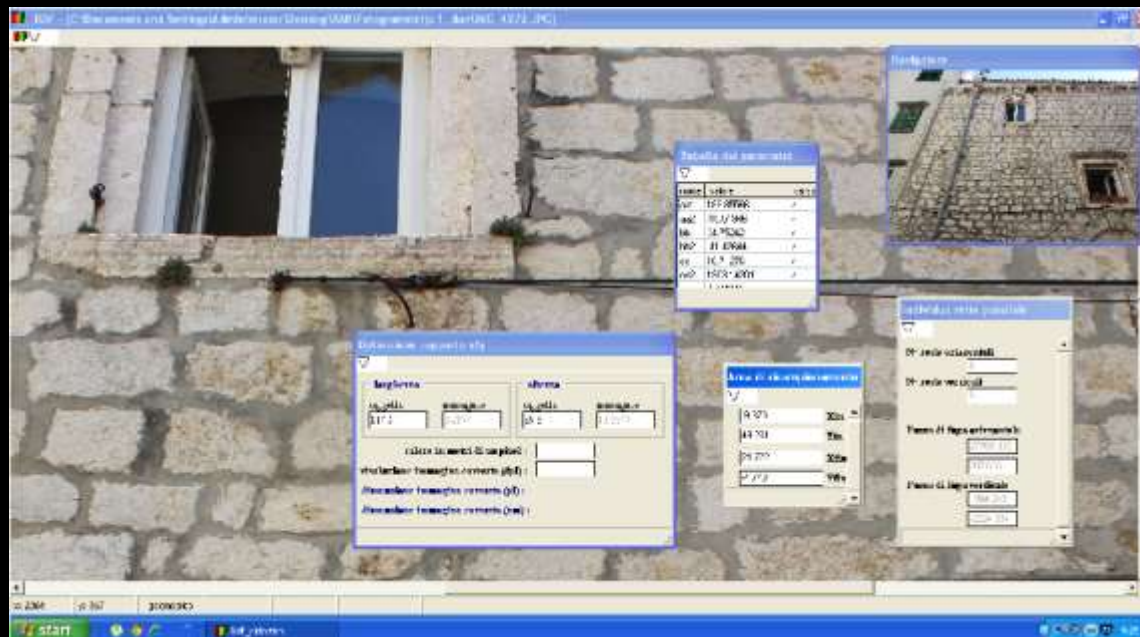
F- Stratigraphical analysis

G- Make forms

H- Inventory : doors, windows, capitals

E- Make photoplan







Before



After

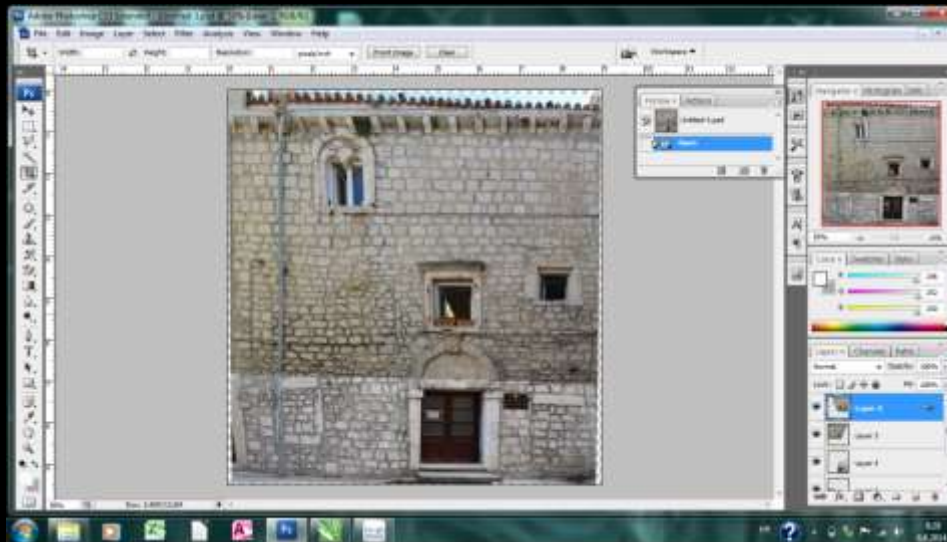
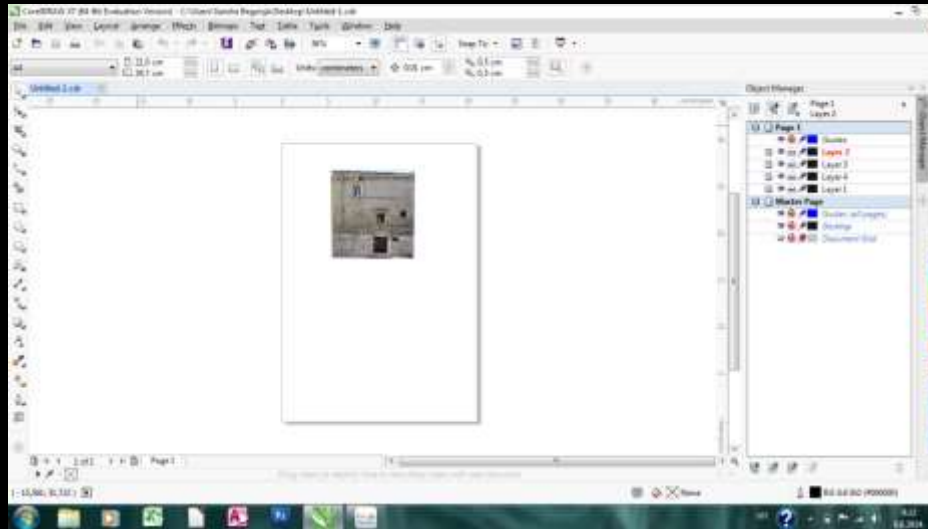
Before



After



Corel Draw, Photoshop



1. Record buildings:

- Observe
- Discover
- Take photos
- Take measurements
- Make photoplan
- Stratigraphical analysis
- Make forms
- Inventory : doors, windows, capitals ...

2. Ethnoarchaeological-sociological analysis

- On the spot
- *Prepare a form for interviews*

3. Textual and photo sampling and studying

4. Synthesis

2. Ethnoarchaeological-sociological analysis

A- On the spot

B- Choosing methodology

C - Prepare the topics for interviews

2. Ethnoarchaeological-sociological analysis

A- On the spot

B- Choosing methodology

C - Prepare the topics for interviews

A- On the spot



2. Ethnoarchaeological-sociological analysis

A- On the spot

B- Choosing methodology

C - Prepare the topics for interviews

B- Choosing methodology

- Questionnaire – bad idea!
- INTERVIEW !
- “Snowball effect” – people who know people
- To capture the real picture and feelings of the citizens
- To find meaningful problems, not to predict them

2. Ethnoarchaeological-sociological analysis

A- On the spot

B- Choosing methodology

C - Prepare the topics for interviews

C - Prepare the topics for interviews

Three groups of questions

- 1. Description of the houses - The appearance, changes, reconstructions, the coats of arms, feelings about their home, infrastructural problems
- 2. The city of Rab - landmarks, symbols, processions, migrations, places of gathering
- 3. Problems and what to change? - legal, conservational, touristic, supply, maintainance
- 4. Preservation, conservation, communication

Topics for interviews - draft

1. Group one - description of the houses

a) The appearance, changes brought time, reconstructions

- did you do any renovations from the inside/outside? Which and why?

b) usage period of the current family

- did you purchase the house, bought it?

- do you live here for the whole year or half?

- are you preparing to move in the future and why?

- do you think that your children should and will continue living here?

- are you renting the space for tourists, partly, whole year...

- do people try/intend to sell the property and move? Is there interest of buying those properties?

- are the locals moving from the city intensively?

c) problems, limitations, legal problems, conservations...

d) the perception of the house

- do you feel proud because you are living in an old house?

- is it a matter of prestige to live in an old house?

- would you prefer living in a new house?

- are you aware that you are living in a historical monument?

d.1) The coats of arms

- was it always here or did you put it/move it?

- do you know who a family it belonged?

- is it important now to have the coat of arms in an old city?

- do you know which families were the famous families?

- can you make a difference between their coats of arms?

d.2) conservation and legal problems

- did you had legal problems/ and problems with the conservators with the restoration, you wanted to make?

- do you know what restorations are allowed and which are not?

2. Group two - the city of Rab

a) Associations

- what monument is the main monument of Rab?

- what are the first association that come to your mind when you think of your city?

- what are the 3 most important symbols of the city and why?

- do you recognize some new important symbols?

- how do you identify yourself, as a Rabian or someone else? (Dalmatian, Croat etc...)

b) places of gathering

- where do you socialize with your friends?

- do you think that people here, due to many tourists change their places of gathering?

- where do young people socialize?

- do the old ceremonies and processions still occur? Do you take part, do young people take part in them?

- do you avoid the touristic places?

3. Group 3 : Problems and what to change?

1) What are the main problems and why?

- what costal, touristic, medical supply.

2) What are the main problems with the building and maintenance?

Thank you for your attention!