

ERASMUS LLP
IP IntSYSTEM

RAB
2-15 JUNE
2014

A stylized graphic of the Rab city skyline. The buildings are white silhouettes with blue accents, set against a dark blue background. Above the buildings are several yellow stars, reminiscent of the European Union flag. The background also features a light blue sea and green hills.

**Studying Post-classical architectures in the city
of Rab**

Alexandra Chavarria



1

2

3

Objectives of
our team were:

Didactic:

unskilled

students specific

hardware and

technical

procedures:

technical design,

RDF, corel draw



Didactic:

unskilled
students **how to
develop a
research on**
postclassical
architectures in
an urban center





Methodological:

?



An aerial photograph of a coastal town, likely in the Mediterranean, featuring numerous buildings with red-tiled roofs. A harbor with several boats is visible in the upper right. Three orange circles containing the numbers 1, 2, and 3 are positioned at the top of the image. A large, semi-transparent banner with white and blue text is overlaid across the middle of the image.

1

2

3

SCIENTIFIC:

EVOLUTION AND MEANING OF THE CITY THROUGH ITS ARCHITECTURES

UNDERSTAND THE BIRTH,

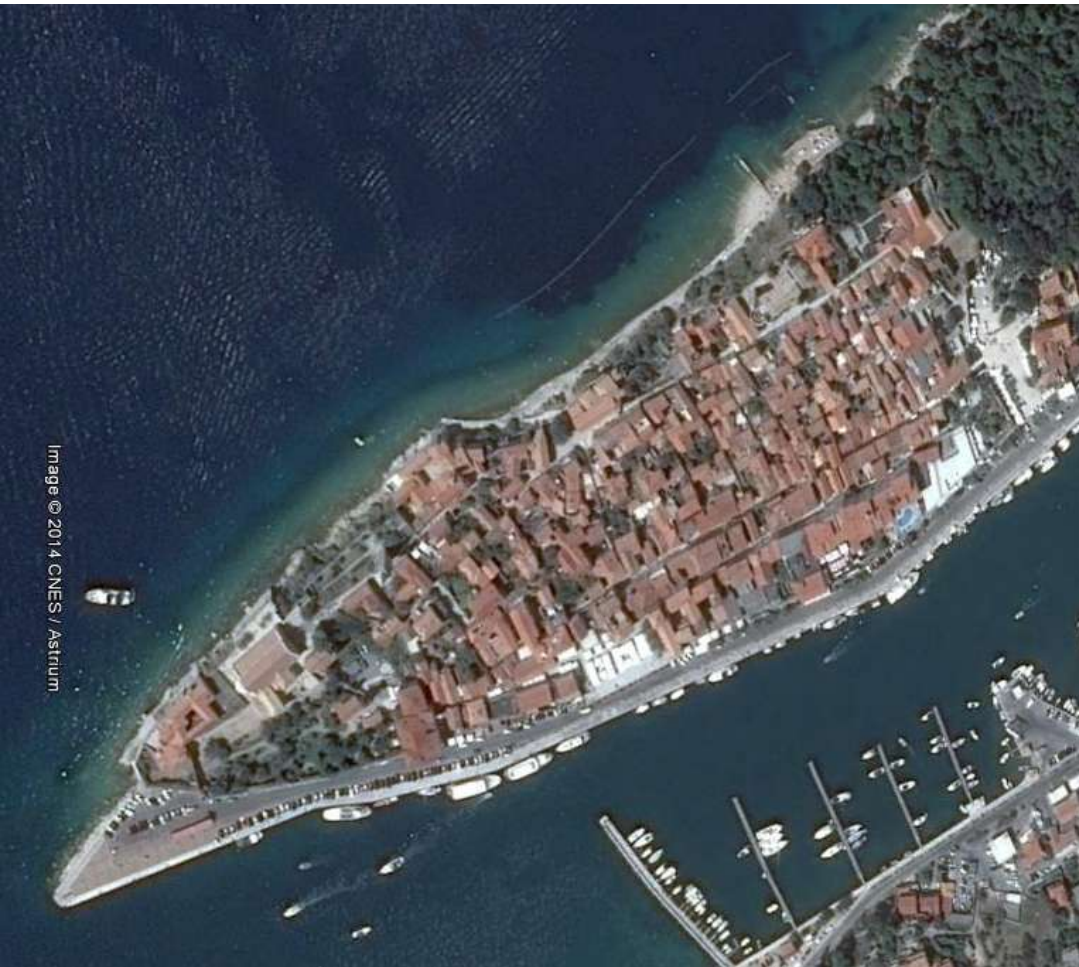


Image © 2014 CNES / Astrium

The objective of 3 different teams was studying **fortified**, **religious and residential architectures** in the city and the territory of **Rab**

Main word:

interdisciplinarity







Fotoplans



The image is a composite of four panels showing different stone masonry techniques. The top-left panel shows a regular, rectangular stone pattern. The top-right panel shows a more irregular, rustic stone pattern. The bottom-left panel shows a large, rounded stone in a rustic pattern. The bottom-right panel shows a regular, rectangular stone pattern. Each panel has a red and white measuring rod on the left side for scale.

COSTRUTIVE

TECHNICS



TIPOLOGIES

