

ERASMUS LLP  
IP IntSYSTEM

RAB  
2-15 JUNE  
2014



# Landscape Team

Julia Sarabia

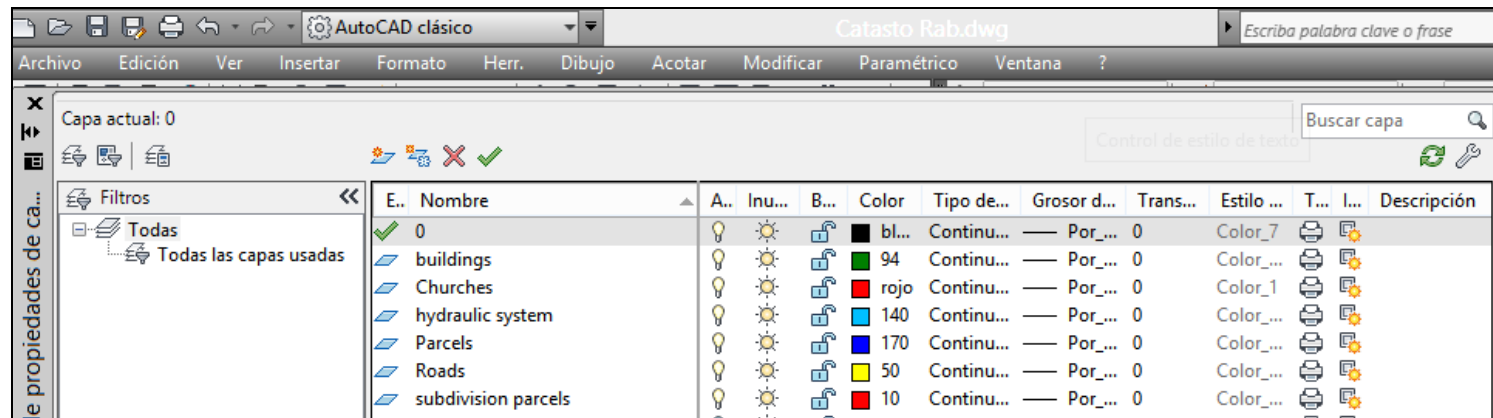
# Main targets of the group

## 1. Training on landscape archaeology

- Tools
- Methodology

## 2. Researching the landscape of Rab

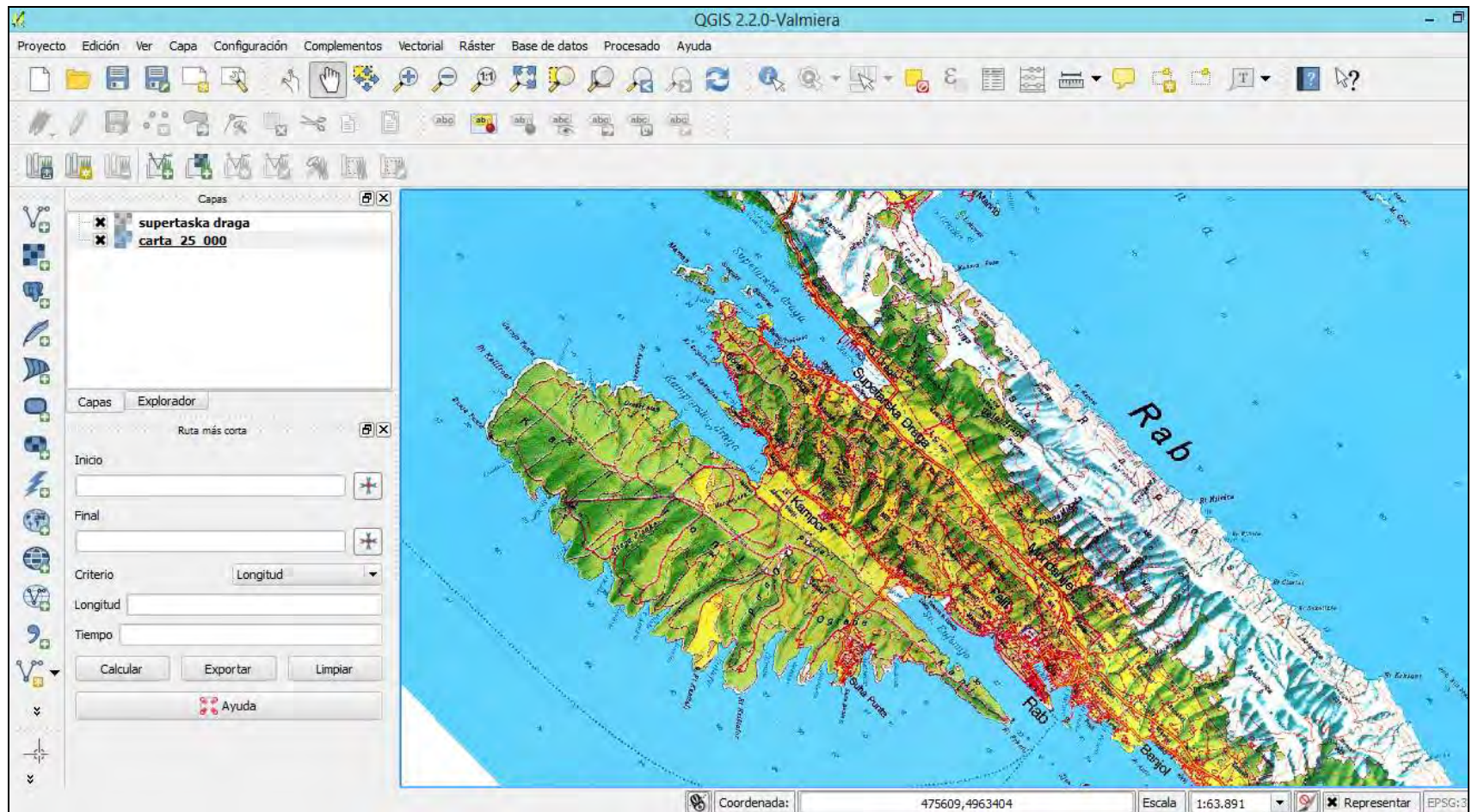
- Detect and interpret the landscape elements



# Training on landscape archaeology

- **TOOLS**

- Geographical Information System (G.I.S.) to manage and georeferencing the cartography and Aerial Photography: Q-GIS

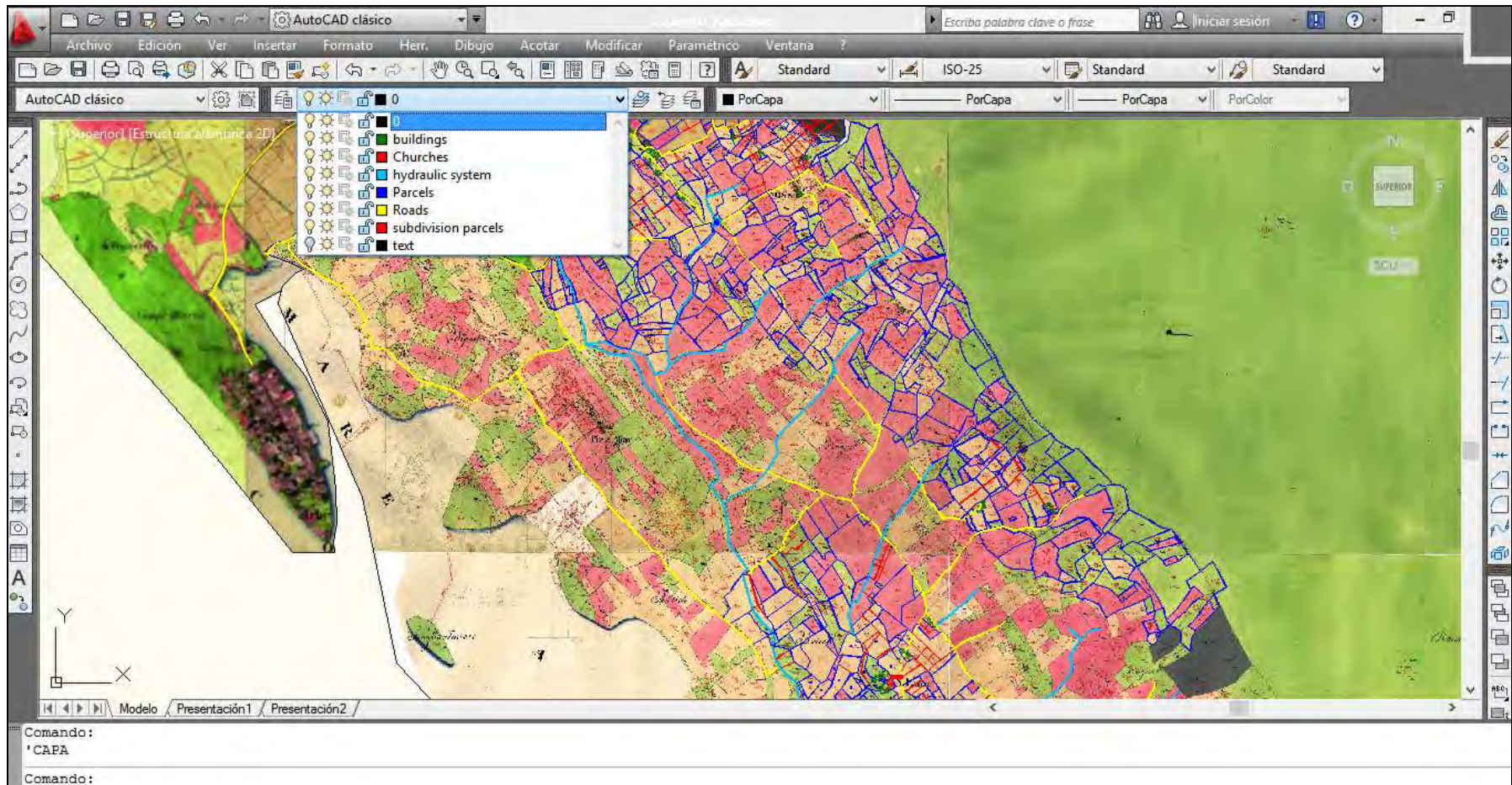




# Training on landscape archaeology

- **TOOLS**

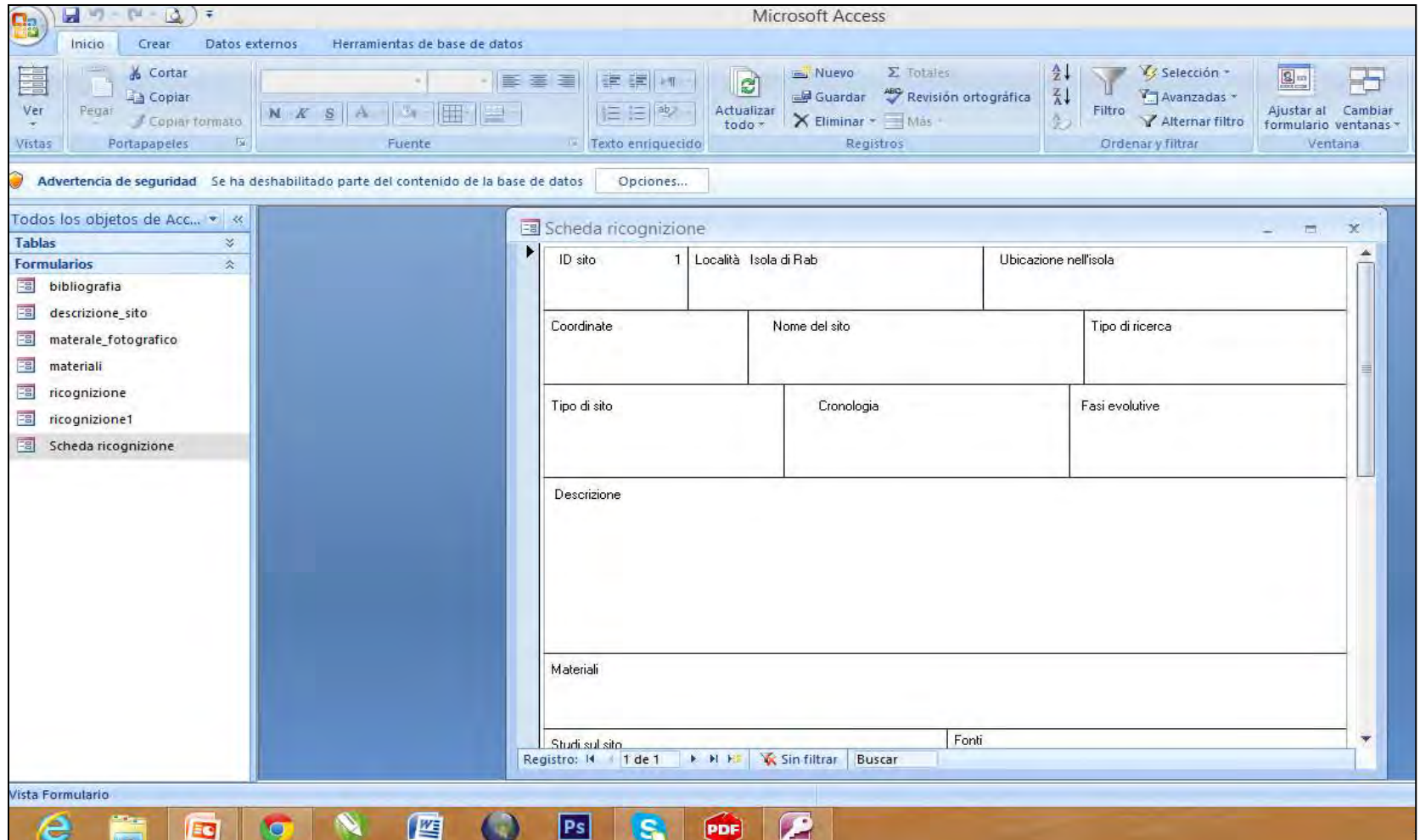
- Software for the mapping digitization and design: AutoCad



# Training on landscape archaeology

- **TOOLS**

- Database to manage the documentation: Microsoft Access

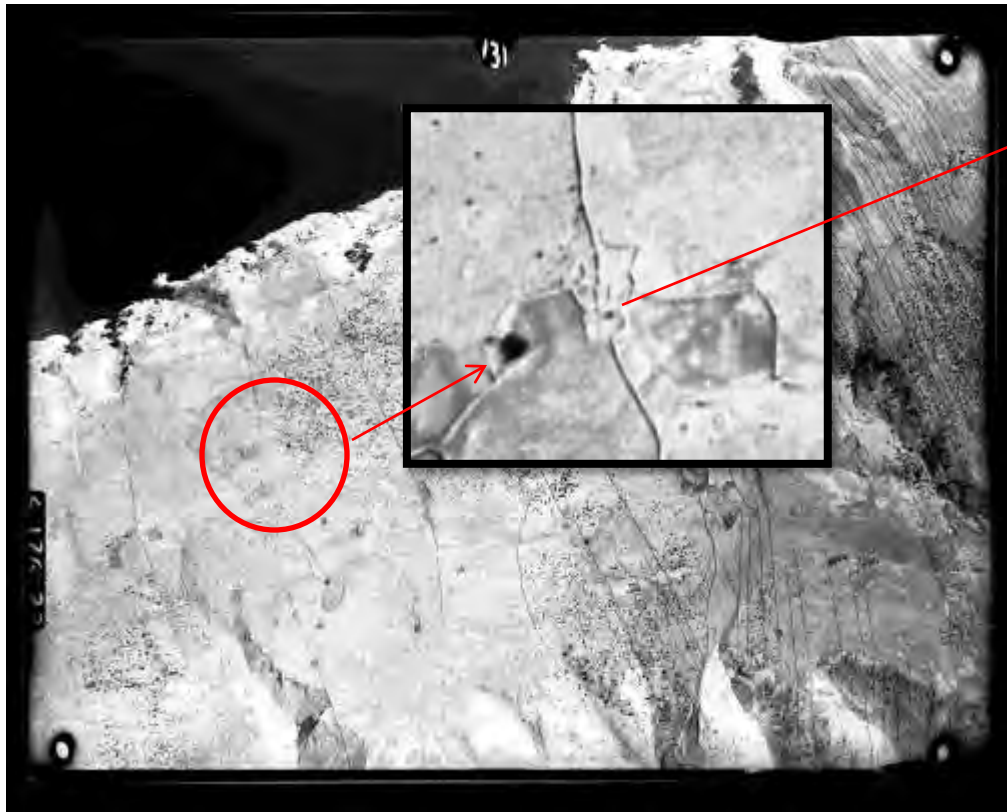




# Training on landscape archaeology

- METHODS**

- Aero-photo interpretation, survey and documentation




Aero-photo interpretation

Survey

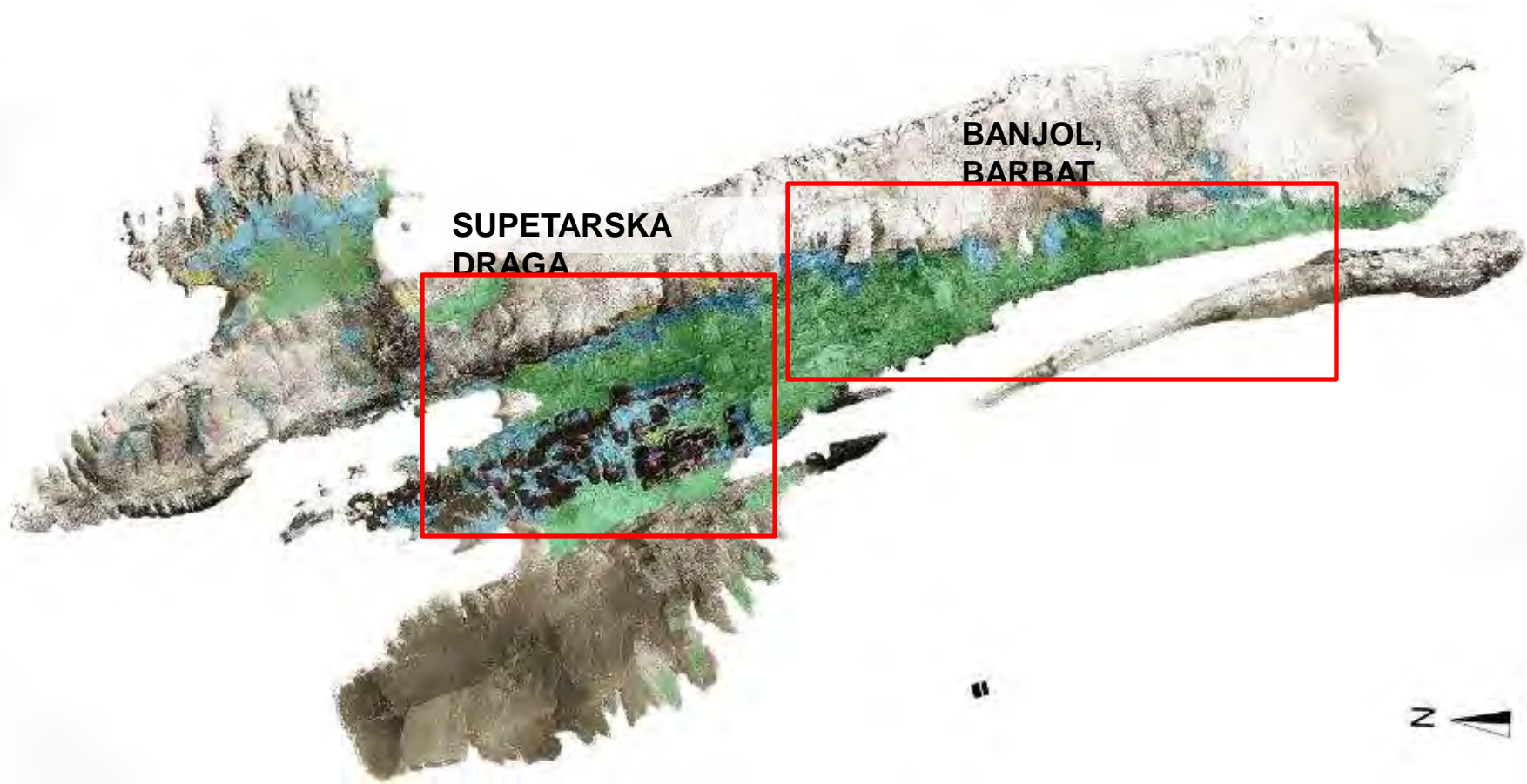


Documentation

Recognition form				UNIVERSITY OF PALERMO	
ID site	Place (Island/Country)	Location on island			
Coordinates	Site name	Type of remains			
Type of site	Chronology	Phase			
Description					
Materials					
Site status		Notes			
Bibliography					
Drawings		Photos			
Author	Date	Date			

# Researching on the Rab landscape

- Detect and interpret the landscape elements of several sample areas:
  - a) Supertarska Draga: work methodology, diachronic landscape morphologies, historical land uses.
  - b) From Supertarska Draga to Banjol and Barbat: churches landscape analysis





# Work and results in Supertarska Draga area

Aero-photo interpretation (source IGM 1941)





# Work and results in Supertarska Draga area

Fafandeli (site morphology)



Archaeological and ethnoarchaeological survey



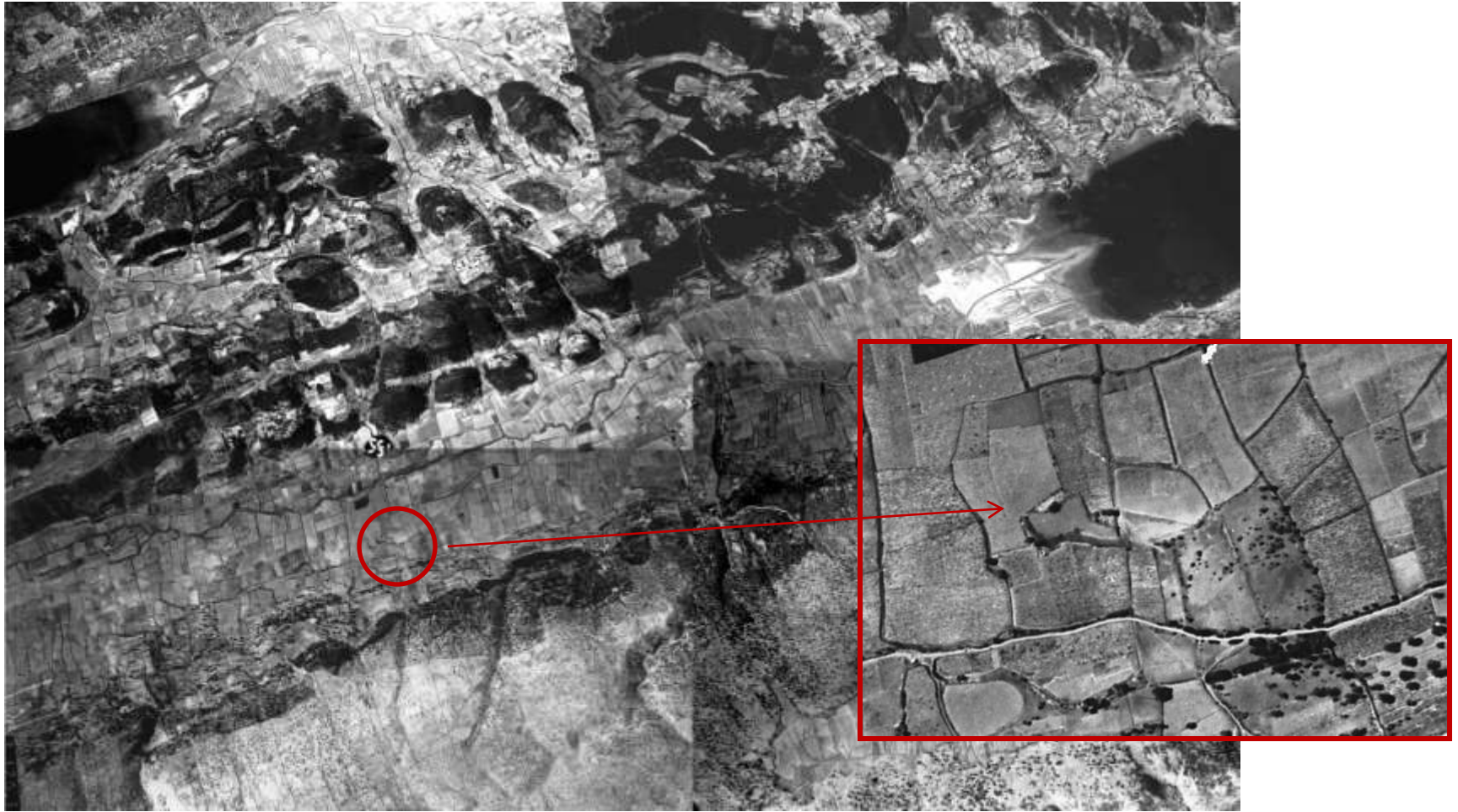
Terraced walls ▲



XIX century rural architecture ▲  
(properties cultivating olive trees and vineyards  
on terraces with dry walls, today abandoned)

# Work and results in Supertarska Draga area

Aero-photo interpretation (source IGM 1941)





# Work and results in Supertarska Draga area

South of S. Peter church



Archaeological survey

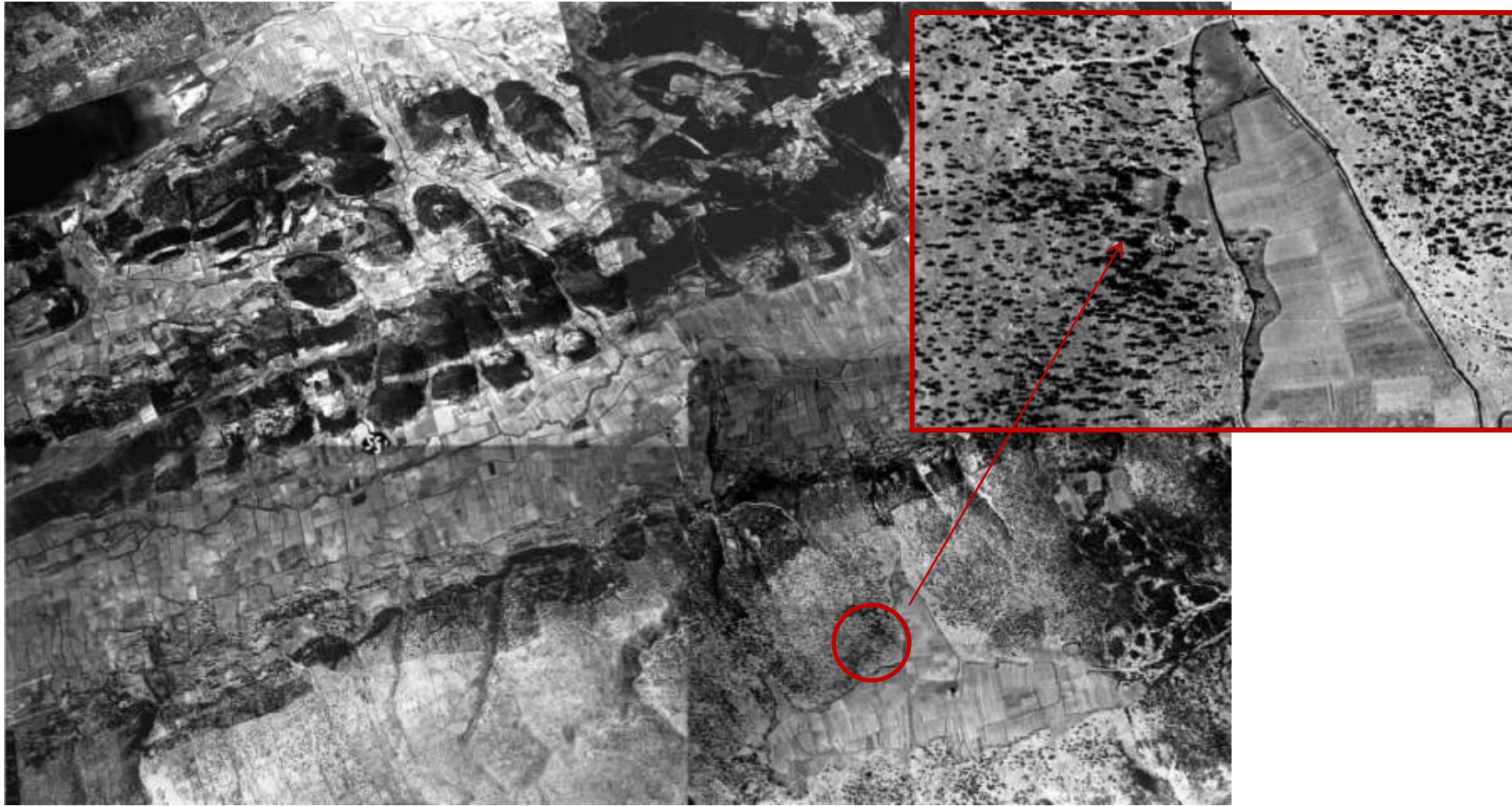


Roman pottery



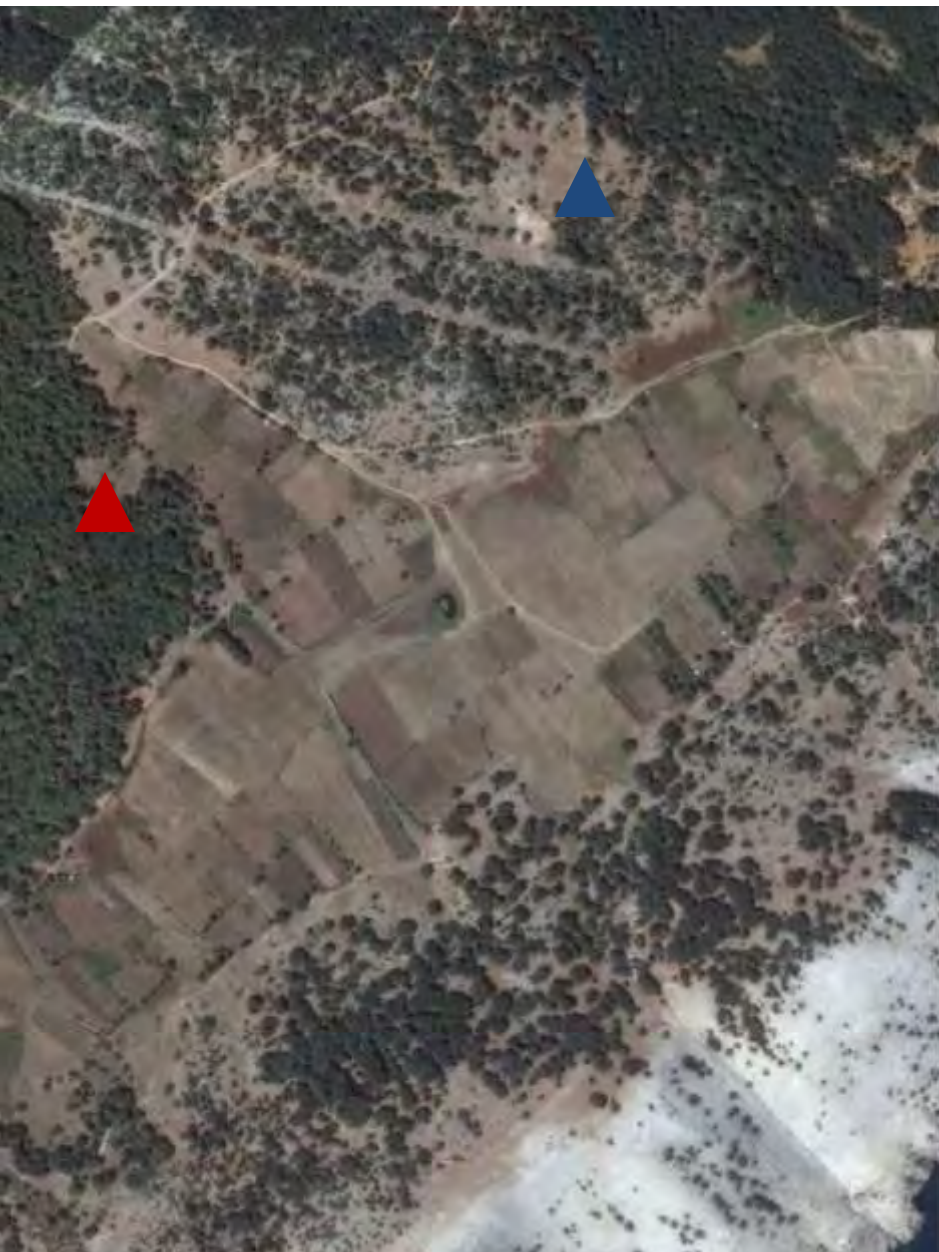
# Work and results in Supertarska Draga area

Aero-photo interpretation (source IGM 1941)



# Work and results in Supertarska Draga area

Fruga area



Archaeological survey



Pastoral enclosure



Domijan, 2007, 250



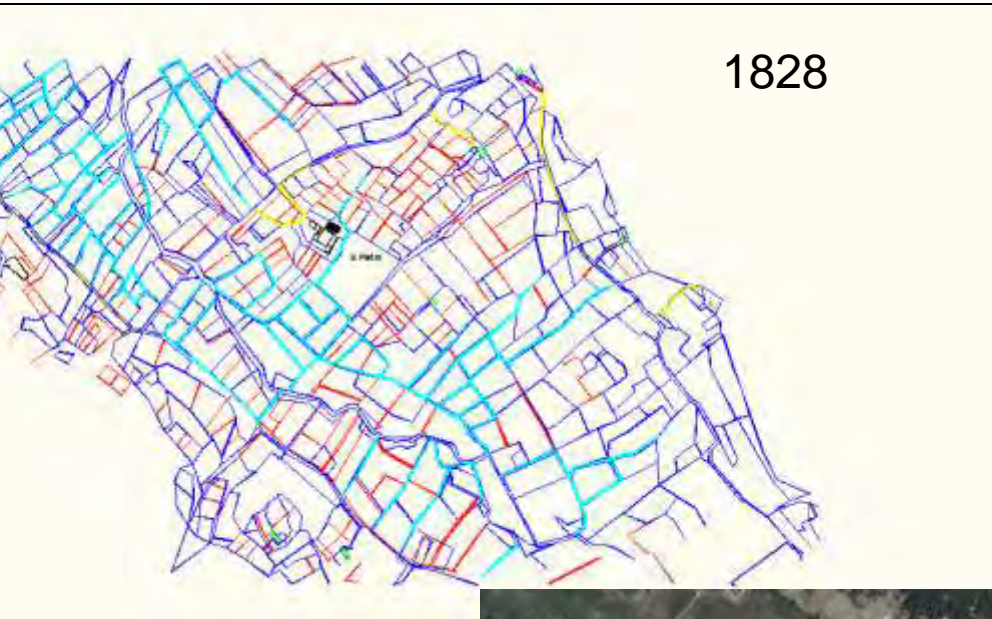
Church of S. Daniel remains (s. XII)





# Work and results in Supertarska Draga area

## Historical land uses on Supertarska Draga plain



Cultivated fields  
abandoned from the  
mid-twentieth century





# Work and results in Banjol-Barbat area

Survey around some early medieval churches and monasteries



S. Lucia



S. Giovanni

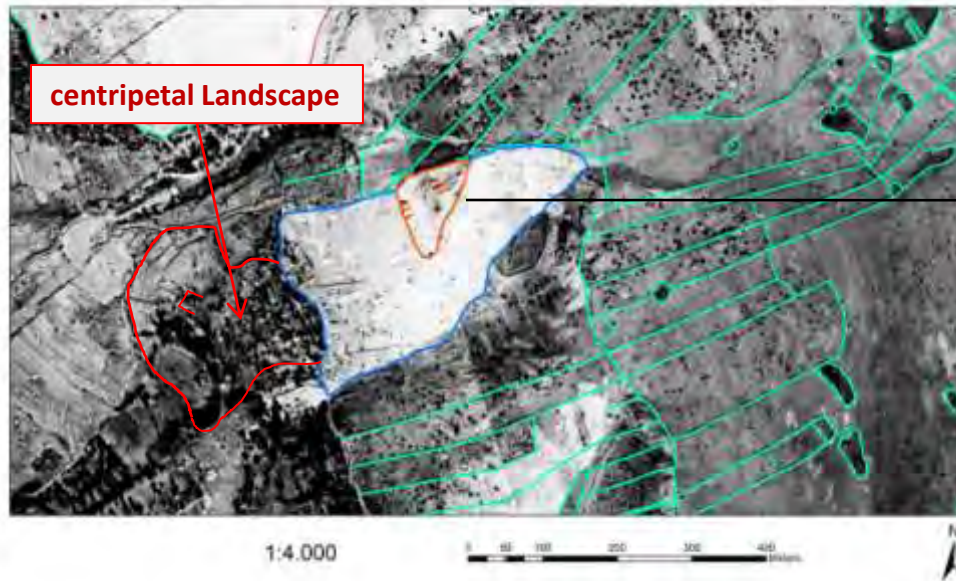


S. Lorenzo

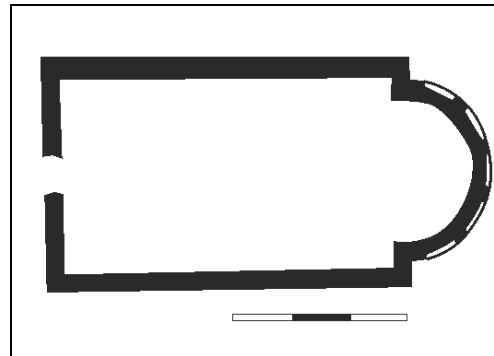


# Work and results in Banjol-Barbat area

Survey around some early medieval churches and monasteries



Paleo Byzantine fortress of  
San Cosme and San Damiano (s. VI),  
Barbat



Domijan, 2007, 241



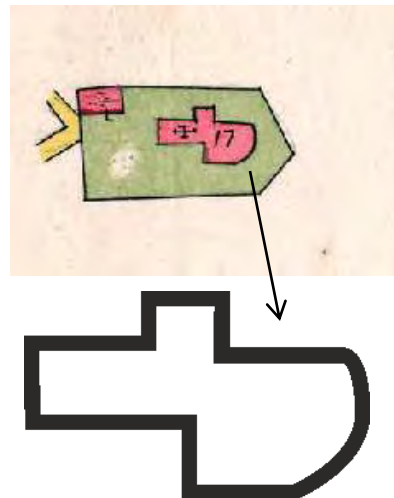


# Work and results in Banjol-Barbat area

Survey around some early medieval churches and monasteries



S. Barbato Church (Barbat)



S. Stefano Church before the reconstruction of 1850 (Barbat), probably origin ss. V-VI

# Work and results in Banjol-Barbat area

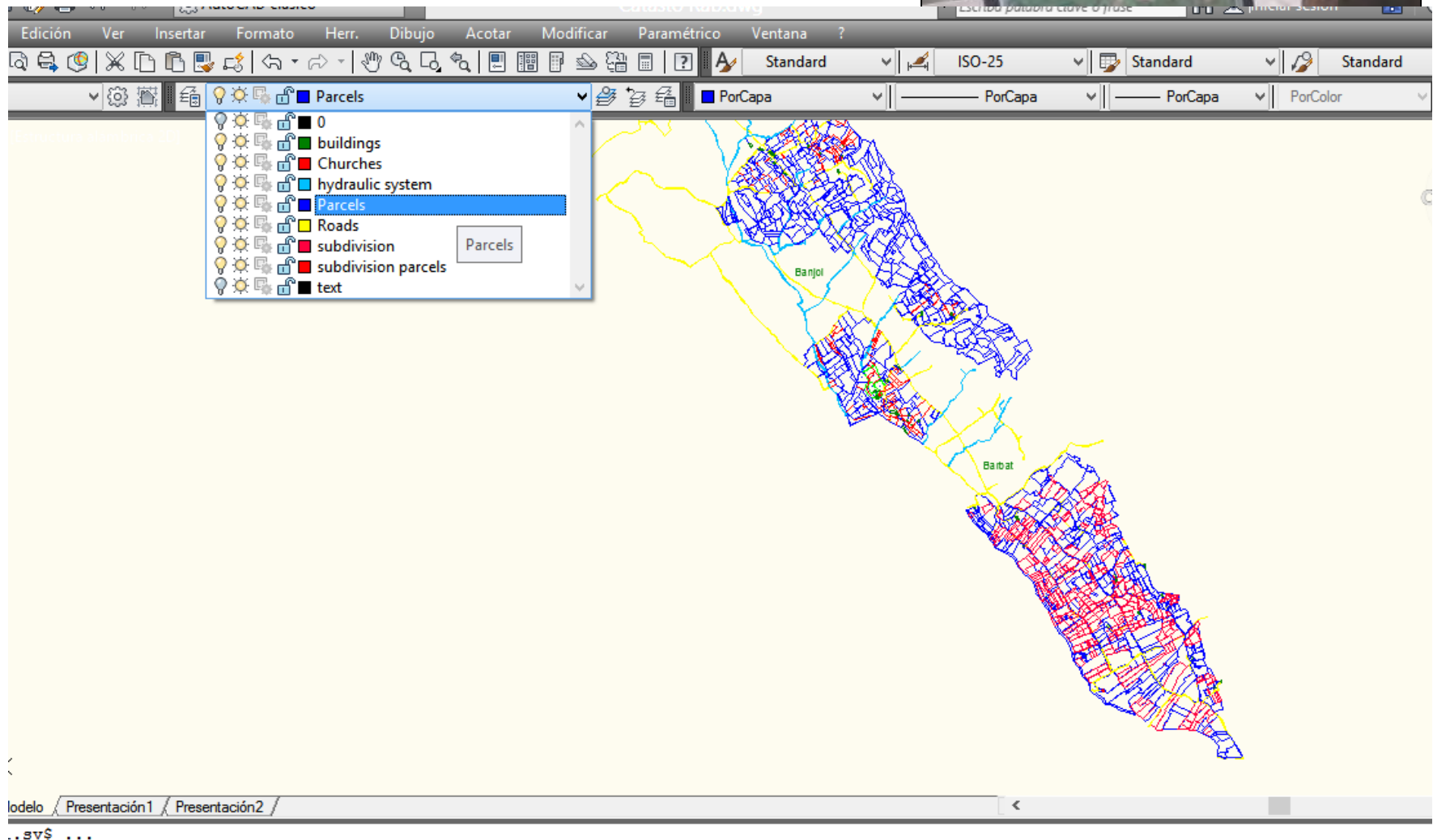
## Survey





# Work and results in Banjol-Barbat area

Morphology of the landscape in the sample area

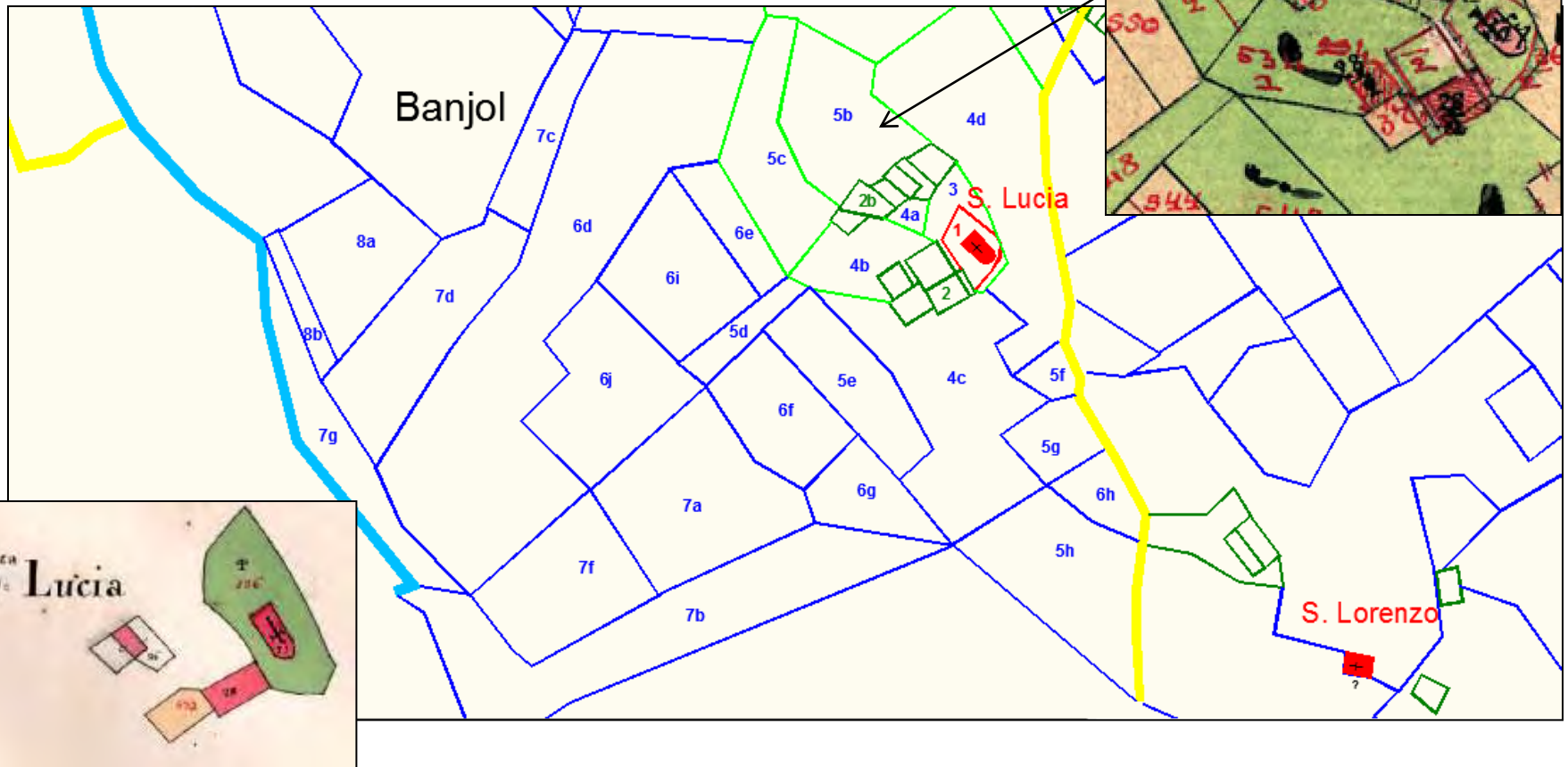




# Work and results in Banjol-Barbat area

Elements that generate the landscape morphology

- The church of S. Lucia



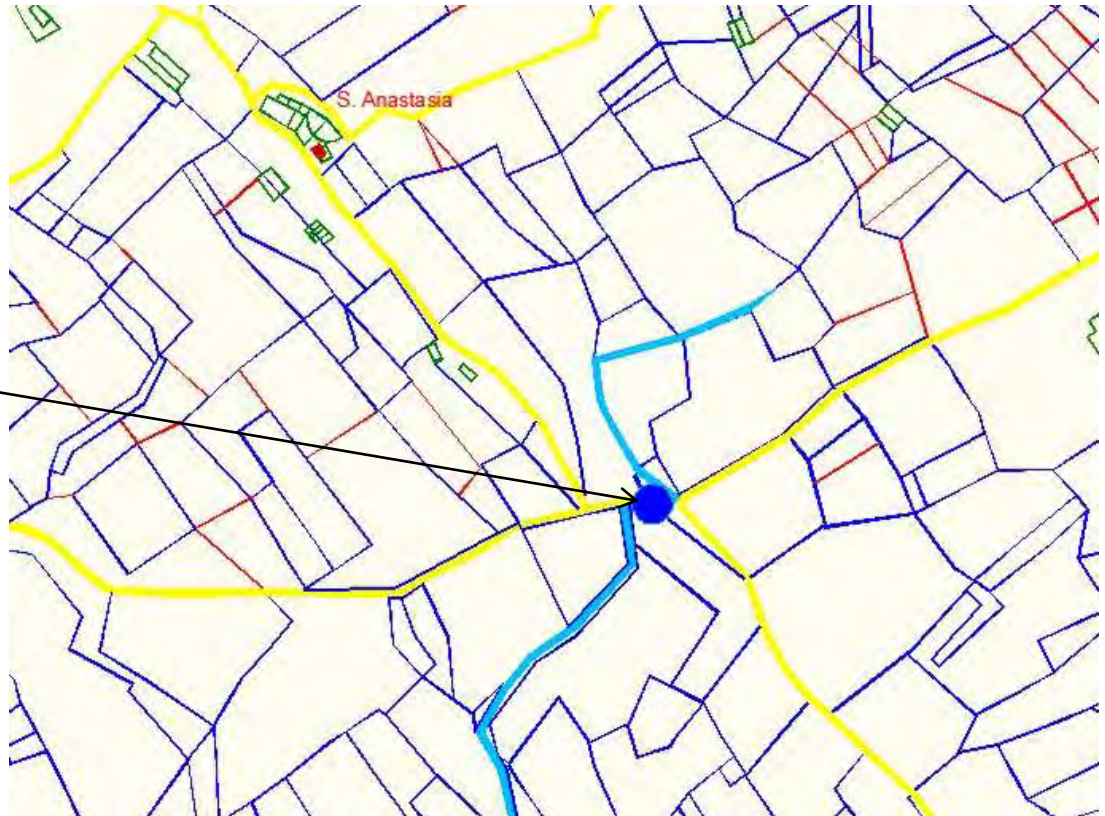
# Work and results in Banjol-Barbat area

## Elements that generate the landscape morphology

- The hydraulic systems



Fountain structure 1922 but probably a water source before

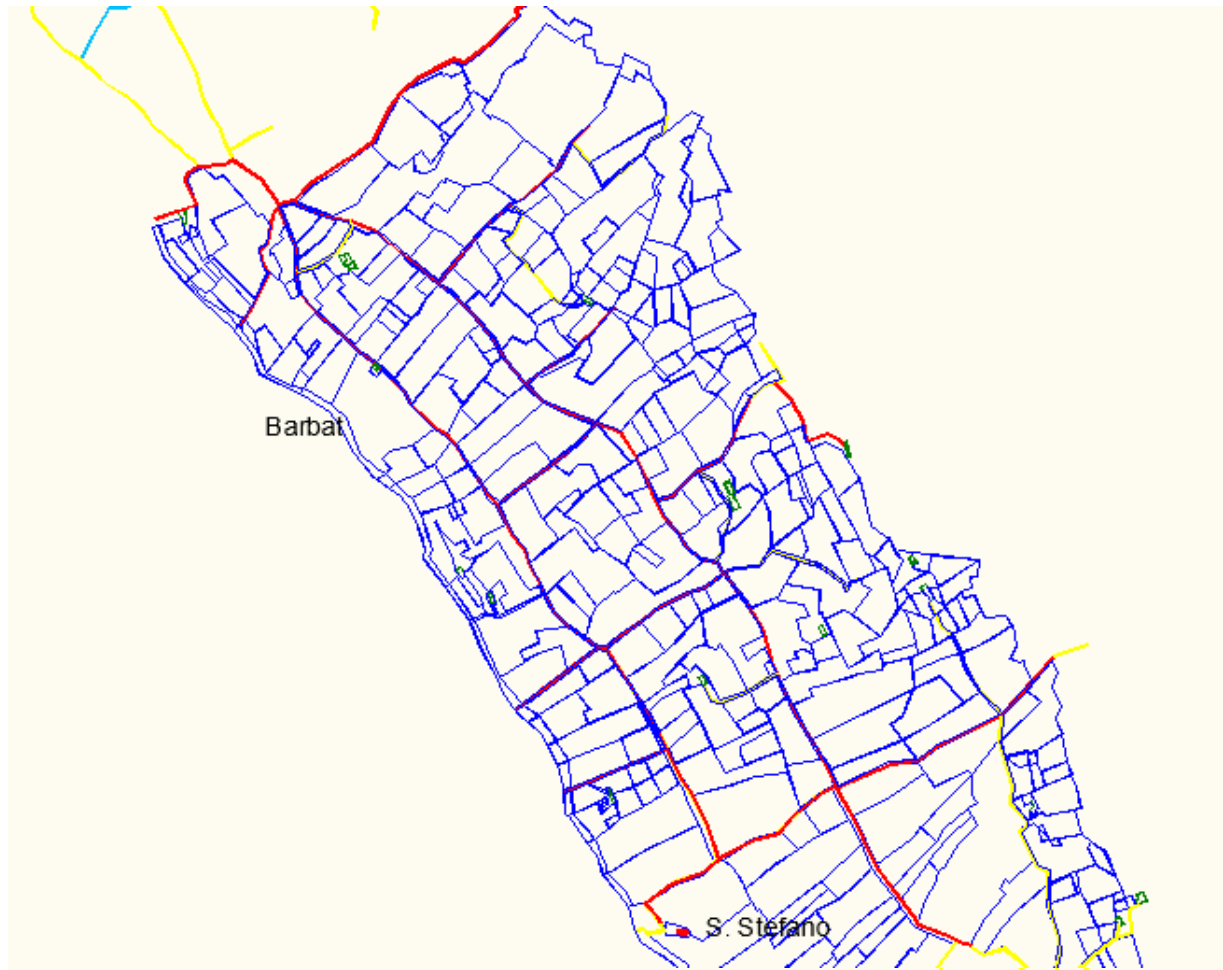




# Work and results in Banjol-Barbat area

## Elements that generate the landscape morphology

- The roads



Orthogonal viability (probably roman landscape)

## Summary in images

